

# Your Journey to Treat Demodex Blepharitis (DB) Starts Now

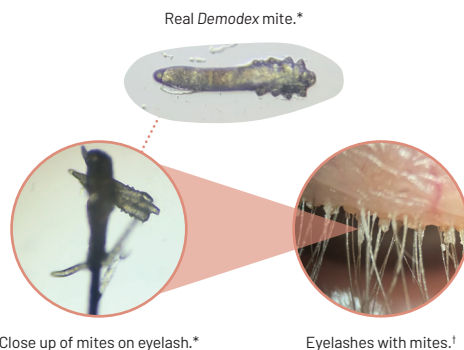
**xdemvy**<sup>®</sup>  
(lotilaner ophthalmic solution) 0.25%



## Understanding Demodex Blepharitis

Demodex blepharitis (DB) is an eyelid disease caused by an infestation of *Demodex* mites, a common mite found on humans.<sup>1,2</sup>

- It's estimated that approximately **25 million eye care patients in the US** are affected by DB.<sup>3,4</sup>
- Patients with DB may experience **eyelid redness, itchiness, swelling, inflammation, and crusties (collarettes)** on the eyelashes.<sup>1,3,5</sup>
- When left untreated, DB can leave you **more prone to other eye-related diseases.**<sup>1</sup>



Crusties  
(collarettes)



BEFORE



AFTER

Real patient with DB used XDEMZY twice daily, in each eye, for 6 weeks. Results may vary.

## XDEMZY<sup>®</sup> Is the Game-Changer in Your Fight Against DB

As the first and only FDA-approved prescription eye drop treatment for *Demodex* blepharitis, XDEMZY can target and kill the mites, get rid of eyelid redness, and reduce crusties (collarettes).<sup>6</sup>

## Treatment Is Made Simple With XDEMZY

- XDEMZY treatment is 1 drop per eye, twice a day, ~12 hours apart, for just 6 weeks. *It is important to take XDEMZY for the entire 6 weeks.*
- If you're using other topical eye medications, ensure a gap of at least 5 minutes between each.
- Remove contact lenses and wait 15 minutes after applying XDEMZY before reinserting.
- Consult with your doctor about continuing your eyelid hygiene routine.

## Indications and Usage

XDEMZY (lotilaner ophthalmic solution) 0.25% is indicated for the treatment of *Demodex* blepharitis.

## Important Safety Information

**Most common side effects:** The most common side effect in clinical trials was stinging and burning in 10% of patients. Other side effects in less than 2% of patients were chalazion/hordeolum and punctate keratitis.

**Please see additional Important Safety Information throughout.**

# Supporting Your XDEMZY® Prescription Experience

## Navigating XDEMZY Access and Savings

If XDEMZY is prescribed to you, your doctor will send your prescription to a nationwide pharmacy.

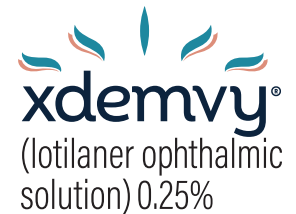
- 1 Expect a text or phone call directly from the pharmacy and have your prescription drug insurance information handy.

**It is important that you answer so your treatment is not delayed.**

- If you don't receive a call or text within 48 hours, reach out to the selected pharmacy.

- 2 The pharmacy will complete any insurance requirements with your doctor.
- 3 If a copay is needed per your insurance coverage, the pharmacy will require payment. Ask your pharmacy about additional affordability programs that might be available.
- 4 The pharmacy will work with you to arrange delivery to your home or local pharmacy.

**For XDEMZY access support, contact Tarsus Connect at 1-866-846-3092.**

**xdemzy**<sup>®</sup>  
(lotilaner ophthalmic  
solution) 0.25%



A real  
XDEMZY patient.

With XDEMZY, you can  
take control and address  
the root cause of your  
*Demodex* blepharitis.<sup>6</sup>



Text "**mites**" to **XDEMZY (933689)**  
to chat or visit **XDEMZY.com**  
to dive deeper.

## Important Safety Information (Continued)

**Handling the Container:** Avoid allowing the tip of the dispensing container to contact the eye, surrounding structures, fingers, or any other surface in order to minimize contamination of the solution. Serious damage to the eye and subsequent loss of vision may result from using contaminated solutions.

**When to Seek Physician Advice:** Immediately seek a physician's advice concerning the continued use of XDEMZY if you develop an intercurrent ocular condition (e.g., trauma or infection), have ocular surgery, or develop any ocular reactions, particularly conjunctivitis and eyelid reactions.

**Use with Contact Lenses:** XDEMZY contains potassium sorbate, which may discolor soft contact lenses. Contact lenses should be removed prior to instillation of XDEMZY and may be reinserted 15 minutes following its administration.

To report SUSPECTED ADVERSE REACTIONS, contact Tarsus Pharmaceuticals at 1-888-421-4002 or FDA at 1-800-FDA-1088 or [www.fda.gov/medwatch](http://www.fda.gov/medwatch).

**Please see full Prescribing Information attached.**

**By prescription only.**

**References:** **1.** Fromstein S, Harthan J, Patel J, Opitz DL. *Demodex* blepharitis: clinical perspectives. *Clin Optim (Auckl)*. 2018;10:57-63. **2.** Rhee MK, Yeu E, Barnett M, et al. *Demodex* blepharitis: a comprehensive review of the disease, current management, and emerging therapies. *Eye Contact Lens*. 2023;49(8):311-318. **3.** Trattler W, Karpecki P, Rapoport Y, et al. The prevalence of *Demodex* blepharitis in US eye care clinic patients as determined by collarettes: a pathognomonic sign. *Clin Ophthalmol*. 2022;16:1153-1164. **4.** O'Dell L, Dierker DS, Devries DK, et al. Psychosocial impact of *Demodex* blepharitis. *Clin Ophthalmol*. 2022;16:2979-2987. **5.** Sędzikowska A, Osęka M, Grytner-Zięcina B. Ocular symptoms reported by patients infested with *Demodex* mites. *Acta Parasitol*. 2016;61(4):808-814. **6.** XDEMZY. Prescribing Information. Tarsus Pharmaceuticals Inc; 2023.

\*Image Credit: Laura Periman, MD

† Image Credit: Vin Dang, OD



©2025 Tarsus Pharmaceuticals, Inc.

Tarsus, the Tarsus logo, XDEMZY, the XDEMZY logo, and certain other trademarks herein are trademarks of Tarsus Pharmaceuticals, Inc.  
US--2500001 2/25